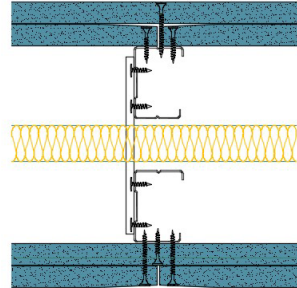


## TWC50-K-60(25)(200) - SPEEDLINE System Data Sheet - Version V1 (24-10-23)

Twin SPEEDLINE 50mm 'C' Stud Partition @600mm Ctrs, with 2x Knauf 15mm Soundshield Plus each side, 25mm APR



### System Performance Breakdown

Fire Resistance:

BS476 Part 22:1987:

Test Ref & Date or Applied Ref & Report:

Max Height:

Thickness:

Duty Grade: BS 5234: Part 2:1992:

Sound Insulation:

**120/120 Minutes (Integrity/Insulation).**

**BMT/FEP/F14077 - BRE Report P102396-1011B**

**Refer to Speedline Specification Clause**

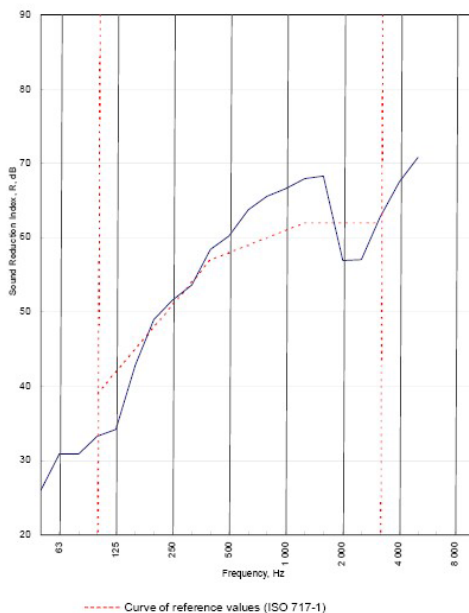
**200 mm.** (At Base Track, Excluding Finishes)

**Severe - Annexes A-F**

**58  $R_w$ dB, -8Ctr** Date Tested or Assessed Against - 26/11/2012

Test Code:	H18045AA
Test Date:	26/11/2012

Freq. Hz	R dB
50	26.0
63	30.9
80	30.9
100	33.3
125	34.2
160	42.9
200	49.0
250	51.6
315	53.7
400	58.4
500	60.2
630	63.8
800	65.6
1 000	66.6
1 250	68.0
1 600	68.3
2 000	57.0
2 500	57.1
3 150	62.7
4 000	67.5
5 000	70.8
6 300	
8 000	
10 000	



Rating according to BS EN ISO 717-1:1997	<b><math>R_w</math> (C;Ctr) = 58 (-3;-8) dB</b>		
Evaluation based on laboratory measurement results obtained by an engineering method:	$C_{50-3150} = -4$ dB	$C_{50-5000} = -3$ dB	$C_{100-5000} = -2$ dB
	$C_{125-3150} = -13$ dB	$C_{125-5000} = -13$ dB	$C_{125-6300} = -8$ dB

TESTED AT ONE OF THE UKAS ACCREDITED LABORATORIES BELOW

B.T.C (H-Ref on Graph)

B.R.E

AIRO

S.R.L

Customer: Metsec plc Hepsec Division

BTC 18045A: Page 9 of 11



SPEEDLINE Drywall Systems, Adsetts House, 16 Europa View, Sheffield Business Park, Sheffield, S9 1XH.

Tel: 0114 231 8030.

Email: [enquiries@speedlinedrywall.co.uk](mailto:enquiries@speedlinedrywall.co.uk)

(As per the requirements set out in ISO/IEC 17025:2017 regarding test data the results stated have been carried out by voestalpine Metsec plc as part of the contract to supply Speedline Metal Sections to SIG Plc)